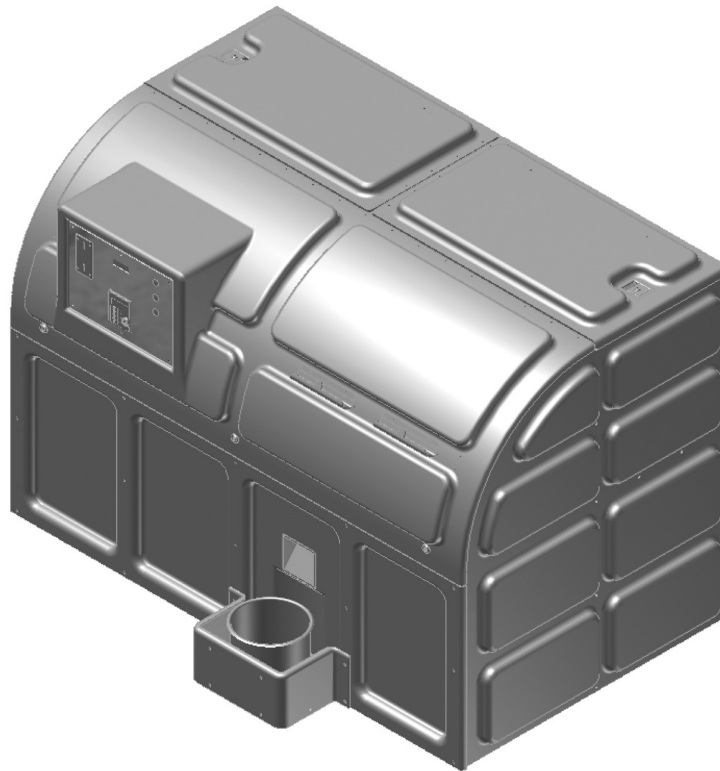




USER'S MANUAL MAGNUM™ BALL DISPENSER



Magnum™ Ball Dispenser

is made with a durable 1/4" ABS thermoplastic body, a tubular steel powder coated frame and rust resistant stainless steel components to provide a durable, reliable framework. Features include a sleek, low profile 49" loading height. The Magnum™ Ball Dispenser also features the ability to use traditional baskets or our exclusive disposable bags, dispensed on rolls, which ever you prefer. A L.E.D. photoelectric sensor allows for accurate ball counts every time. Capacity is 12,000 golf balls as well as 2,400 bags. The Magnum™ Ball Dispenser measures 74" wide x 49" high x 51" deep, total empty weight is 800 lbs.

MODEL NUMBER 88000

Standard Golf Company
6620 Nordic Drive
Cedar Falls, IA 50613 USA
www.standardgolf.com

Phone: 319-266-2638
Fax: 319-266-9627

1. Inspect the machine after removing from the shipping crate. Do not operate the machine if there is any damage.
2. Remove Pallet (see figure 2.1).
3. Once taken off the pallet, level the Magnum™ Ball Dispenser on flat ground.
4. Place machine on a hard, level surface.
DO NOT OPERATE MACHINE IN STANDING WATER OR IN THE RAIN.
5. Plug machine into a 110V grounded receptacle.
DO NOT ATTEMPT TO USE MACHINE WITH A NON-GROUNDED POWER SOURCE.
6. To operate machine:
 - a) Plug in machine to turn on.
 - b) Add approx. 100 golf balls to the golf ball hopper.
 - c) Insert basket or bag into the bag fill container prior to dispensing balls.
 - d) To dispense balls, insert token. This will allow you to select size of bucket, depending on quantity of tokens inserted.
 - e) Ball count is pre-set to 25 balls, 35 balls and 50 balls depending on size of bucket selected.
 - f) Select quantity of balls desired to dispense.
 - g) Upon successful dispensing of balls, fill hopper with balls.
7. MAGNUM™ BALL DISPENSER capacity:
 - a) MAGNUM™ BALL DISPENSER holds 12,000 golf balls.
 - b) When the hopper's contents falls below 200 balls, the computer screen will flash a warning, conveyor will operate at a reduced speed.
 - c) Dispenser will operate until it is completely empty.
8. If the Magnum™ Ball Dispenser jams, it will automatically reverse dispensing direction (3) times to eliminate jam. If machine remains jammed:
 - a) Unplug machine.
 - b) Remove ball access panel (see figure 2.2).
 - c) Clean conveyor (see figure 2.3), reinstall ball access panel, then plug in.

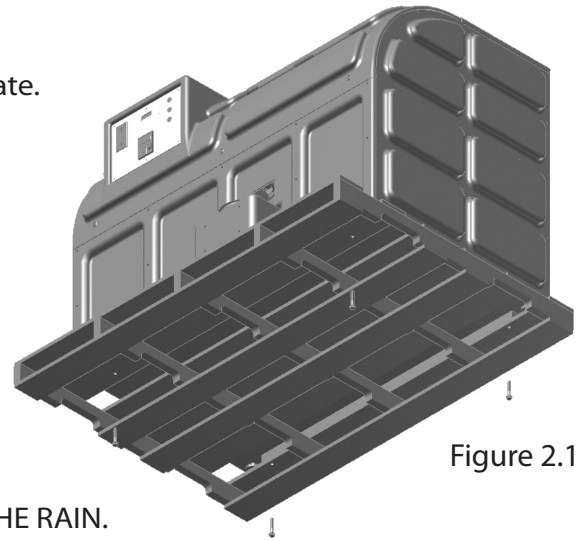


Figure 2.1

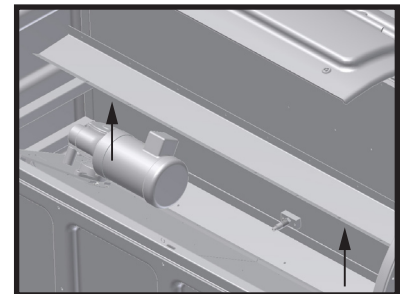


Figure 2.2

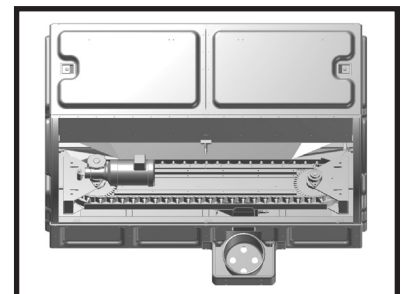
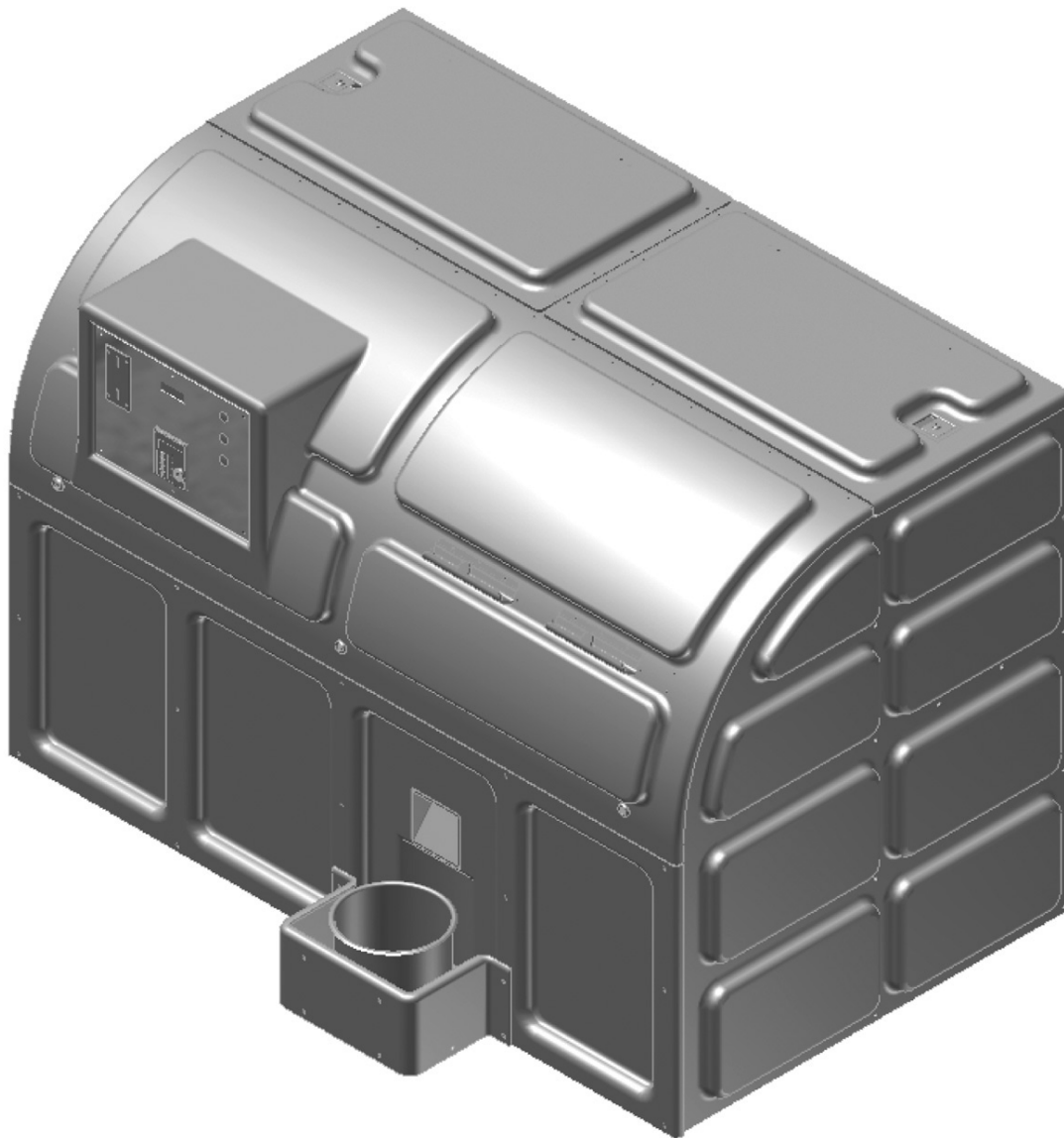


Figure 2.3



**MAINTENANCE AND PARTS MANUAL FOR THE
MAGNUM™ BALL DISPENSER**



PREPARED JUNE 2008

PART NUMBER 88000

MAGNUM BALL DISPENSER WARRANTY

Standard Golf Company warrants its products to free from defects in materials and workmanship within a period of one year from the date of purchase. Standard Golf's sole responsibility under this warranty shall be to repair, replace, or refund to its Distributor the price of the defective product or component. All such repairs, refunds and replacements are subject to such rules, terms and conditions and Standard Golf may promulgate from time to time.

INITIAL INSPECTION

Inspect the machine immediately prior to removing machine from pallet. If it is found detached or moved from the pallet, there is possibility of damage. Inspect the machine. If any damage is discovered, immediately notify the shipping carrier and take the appropriate action.

PALLET REMOVAL

The MAGNUM™ BALL DISPENSER has been shipped from the manufacturer assembled ready to operate. It is attached to a pallet that needs to be removed prior to operating machine as specified below:

- a) Place dispenser in a flat location.
- b) Remove the (4) 1/2" bolts that securely attach dispenser to pallet.
- c) Insert fork truck tines under side of machine, to lift dispenser free from pallet.
- d) Level dispenser by loosening the 1/2" locking nut on the adjustable feet. Once feet are unlocked, rotate feet individually until dispenser sits level. Once dispenser is level, tighten the 1/2" locking nut.

INSTALLATION AND HOOK-UP

- a) The MAGNUM™ BALL DISPENSER may be used outdoors; however it is recommended to place the machine on a hard surface and not have it set directly on the open ground.
- b) It is necessary that the machine be perfectly level. The dispenser is gravity fed. The conveyor needs to be at the correct angle to function in an optimally.
- c) Plug machine into a standard 110V, 3-prong wall receptacle or UL approved extension. Be careful to keep electrical power source clear of water.

Warning: The Ball Dispenser is designed with a standard 3-prong grounded safety plug. DO NOT ATTEMPT TO DEFEAT ITS PURPOSE. Use of a plug adaptor or non-ground power source can result in shock or injury.

INITIAL MACHINE START-UP

- a) Plug in the MAGNUM™ BALL DISPENSER to turn on.
- b) Add approx. 100 golf balls to the golf ball hopper.
- c) Insert basket or bag into the bag fill container prior to dispensing balls.
- d) To dispense balls, insert token. This will allow you to select size of bucket, depending on the quantity of tokens deposited.

- e) Ball count is pre-set to 25 balls, 35, balls and 50 balls depending on size of bucket selected.
- f) Select quantity of balls to be dispensed.
- g) Upon successful dispensing of balls, fill hopper with balls.

WARNING: Never operate machine with lids or panels open or the latches unfastened. Operating machine with lids or panels open could result in serious injury or death.

MAINTENANCE PROCEDURES

1. ALWAYS unplug MAGNUM™ BALL DISPENSER when servicing unit.
2. Clean out with power washer when debris is present.
3. Lube all (4) Zerk's every three months of use (see figures 2.1, 2.2).

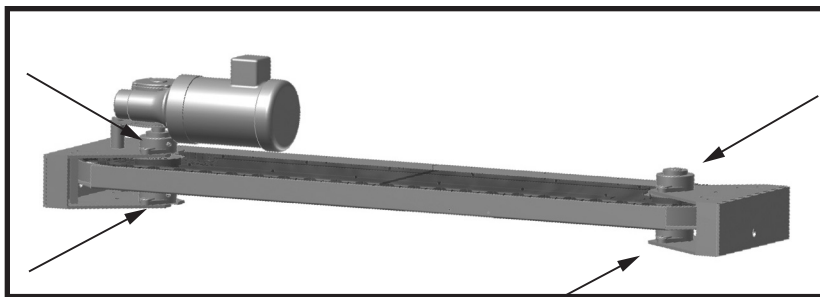


Figure 2.1

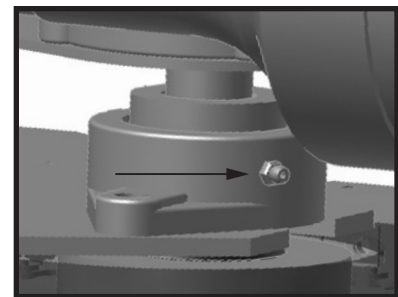


Figure 2.2

4. Inspect panels for snug fitment.
5. Adjust chain tension when necessary.
 - a) Remove golf balls from hopper.
 - b) Remove both side panels from MAGNUM™ BALL DISPENSER (see figure 2.3).
 - c) Locate tensioners on both sides of MAGNUM™ BALL DISPENSER, tighten each tensioner clockwise approx. 1/8 turn (see figures 2.4).
 - d) Tighten both tensioners equally.
 - e) Replace panels onto dispenser.

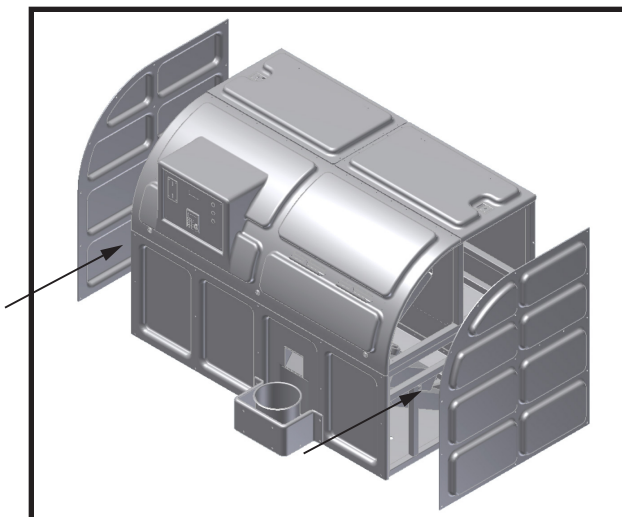


Figure 2.3

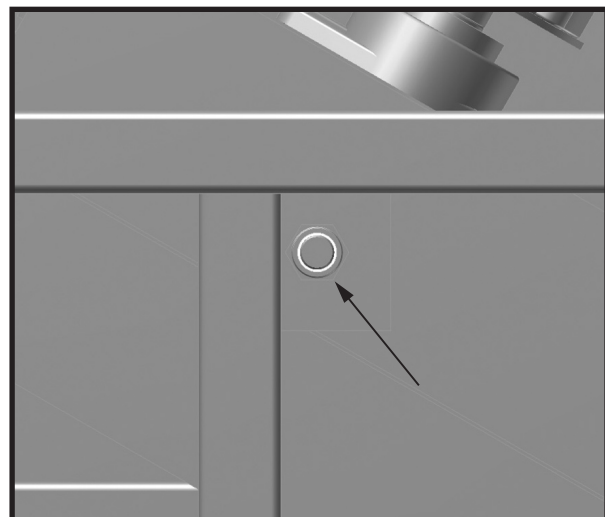


Figure 2.4

E RANGE (OPTIONAL)

1. Key electronically holds customers credits for dispensing golf balls.
2. eKey Drive connects to course computer through USB drive adapter
3. Keys can be loaded with credit to be used with MAGNUM™ BALL DISPENSER. For further directions, see Range informational CD (CD manual).

SCREEN PROGRAMMING

Screen displays actual functions being performed by the MAGNUM™ BALL DISPENSER, as well as alerts user of problems with machine.

1. Normal functions:
 - a) Welcome To The Standard Golf Magnum Dispenser
 - b) Insert Token To Begin
 - c) Remove Bag, Place Bag or Basket In Ball Collector
 - d) Press Selection Button
 - e) Large Selection Amount
Medium Selection Amount
Small Selection Amount
 - f) Dispensing Balls
 - g) Thank You
2. Error functions:
 - a) Ball Hopper Low
 - b) Ball Hopper Empty
 - c) Ball Belt Jammed

PROGRAMMING

1. To gain access to MAGNUM™ BALL DISPENSER'S computer system, press and hold both the SMALL & LARGE ball selection buttons, hold for 10 seconds.
2. Functions include:
 - a) Changing ball counts, SMALL, MEDIUM & LARGE.
 - b) Jogging of dispenser conveyor.
 - c) Return to normal operation.
3. To toggle through the different programs, press the "L" button:
 - a) To increase quality of balls in either the SMALL, MEDIUM or LARGE settings, press "M"
 - b) To decrease quality of balls in either the SMALL, MEDIUM or LARGE settings, press "S"
 - c) To jog dispenser conveyer forward, press "S".
 - d) To jog dispenser conveyer in reverse, press "M".
 - e) To return to normal operation of MAGNUM™ BALL DISPENSER, press "L"

IF MEMORY IS ERASED

1. Contact us immediately.
2. We will provide a file for you to download, as well as instructions for install onto the MAGNUM™ BALL DISPENSER'S programmable logic control (PLC).
3. File will need to be transferred from a computer to the PLC through the PLC's I/O expansion port (see figure 4.1).