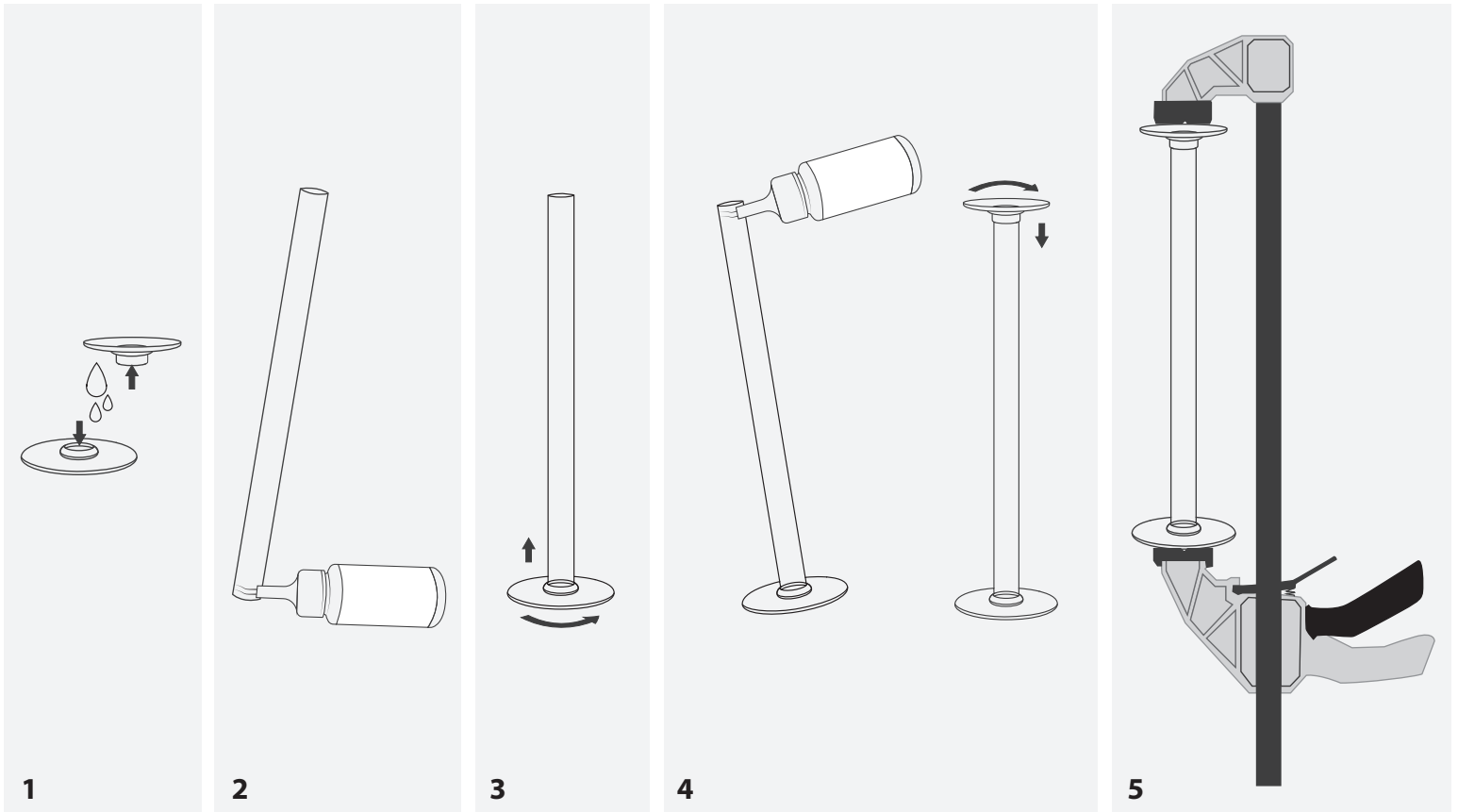


HOW TO ASSEMBLE NO TOUCH BALL ELEVATOR

INSTRUCTIONS

1. Dampen inside ring of each disc with water. Set aside.
2. Using Original Gorilla Glue® apply a *thin* layer of glue to the edges at the end of the tube.
3. Insert tube into the flange of the disc. Twist disc and tube together. Wipe off any excess glue.
(Note: tube should only fit one way)
4. Repeat steps 2-3 with remaining disc to the opposite end of the tube.
5. Clamp or press discs and tube together for 1 to 2 hours for a stronger bond line.
Glue is fully cured in 24 hours.



HOW TO INSTALL NO TOUCH BALL ELEVATOR ON FLAGSTICK

INSTRUCTIONS

1. Remove flag from flagstick.
2. Slide No Touch Ball Elevator over flagstick with the larger disc facing down.
3. Replace flag.
4. Insert flagstick with No Touch Ball Elevator into cup.

